

# Etcetera

## Ishpeming council, planning commission to meet on Partridge Creek Farm

By ZACH JAY  
Journal Ishpeming Bureau

ISHPEMING — The Ishpeming City Council and Planning Commission will hold a joint meeting Monday to discuss a proposed lease agreement between the city and the nonprofit Partridge Creek Farm.

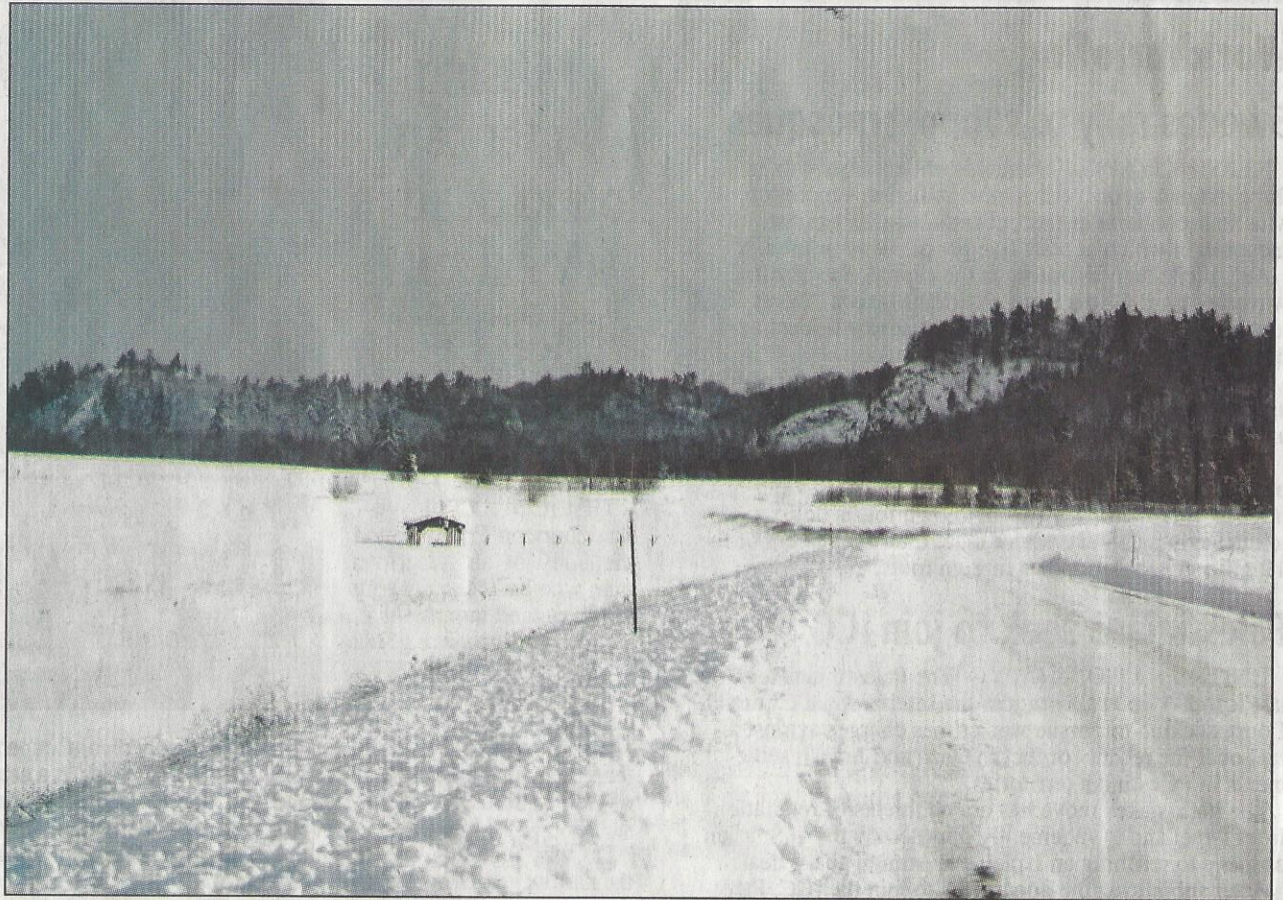
The meeting will be at 7 p.m. at the Ishpeming Senior Center.

The city council voted at its December meeting to set a date when it could discuss plans for the farm together with the planning commission and members of the farm board, including chairman Dan Perkins.

Under the proposed agreement, the city would lease the farm a 17.8-acre plot of land in the nascent development area known as "Hematite Heights" off Malton Road for 50 years at \$1 a year. That plot is described by the lease as being "bounded by the (Iron Ore) Heritage Trail, Malton Road, the old city landfill, and an obsolete powerline at the headwaters of Partridge Creek."

In a Dec. 27 email addressed to "Friends of the Farm," Perkins urged people to come show their support for the farm at Monday's meeting, and gave some updates as to the farm's plans this summer.

"We are initiating the project ... this spring with an Incubator Farm of two hoop houses, a water collection and retention system, and a soil manufacturing plot," he wrote. "We plan on spending \$20,000 on project with all of the labor being volunteered. Our five year plan involves a farming and educational staff as well as substantial greenhouse and educational structures but before we grow in that way we need to get our ground game active and involve the



Shown is the 17.8-acre piece of land in Ishpeming that Partridge Creek Farm is hoping to use as the site of its organic community farm beginning in the summer of 2015. The land is "bounded by the (Iron Ore) Heritage Trail, Malton Road, the old city landfill, and an obsolete powerline at the headwaters of Partridge Creek," according to the lease agreement the farm hopes to enter into with the city of Ishpeming. The lease would be a 50-year agreement for \$1 a year. (Journal photo by Zach Jay)

community."

At council's December meeting, Councilman Joe Juidici expressed some reservations about the farm, particularly the long length of the lease and the size of the plot. Mayor Mike Tonkin conceded that although the planning commission had already approved the project twice, he said it was

better to be diligent on a project like this than rush it through, get it wrong and create future problems for the city.

Zach Jay can be reached at 906-486-4401. His email address is [zjay@miningjournal.net](mailto:zjay@miningjournal.net).